

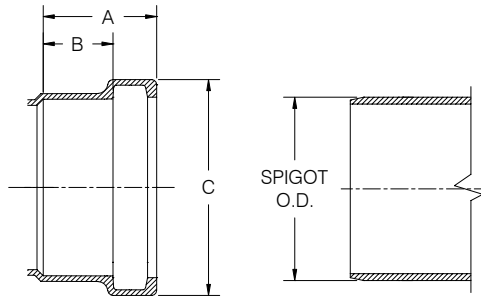
HARCO SDR-35 PVC GASKETED SEWER FITTINGS

DESIGN DATA

Applicable Standards

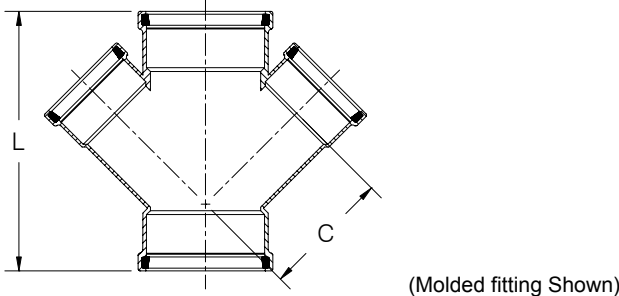
| | |
|-----------------|---------------------|
| Fittings: | ASTM D-3034, F-1336 |
| Materials: | ASTM D-1784 |
| Joints: | ASTM D-3212 |
| Gaskets: | ASTM F-477 |
| Wall Thickness: | SDR-35 |
| Installation: | ASTM D-2321 |

BELL SPECIFICATION



| SIZE | STYLE | A | B | C | Pipe O.D. |
|------|------------|------|-----|-----------|-----------|
| 4 | Molded | 2.72 | 1.8 | 5.19 | 4.215 |
| 6 | Molded | 3.47 | 2.5 | 7.38 | 6.275 |
| 8 | Molded | 4.02 | 3.0 | 9.62 | 8.40 |
| 10 | Fab/Molded | 7.5 | 4.8 | 10.6/10.8 | 10.50 |
| 12 | Fab/Molded | 7.5 | 4.8 | 12.6/14.0 | 12.50 |
| 15 | Fab | 7.5 | 4.8 | 17.1 | 15.3 |

DOUBLE WYE GxGxG



| SIZE | PART No. | STYLE | C | L | WT. (approx.) |
|------|----------|--------|-----|------|---------------|
| 4X4 | 204-0404 | Fab | 5.2 | 11.8 | 3.0 |
| 6X4 | 204-0604 | Molded | 6.8 | 16.0 | 5.0 |
| 6X6 | 204-0606 | Fab | 8.0 | 16.0 | 8.0 |
| 8X4 | 204-0804 | Fab | 8.0 | 15.0 | 9.3 |
| 8X6 | 204-0806 | Fab | 9.2 | 18.5 | 11.9 |

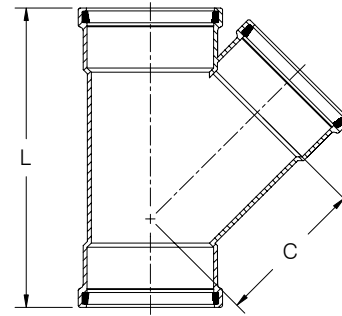
NOTES:

- All lay lengths & weights are approximate and are subject to change without notice.
- Fabricated fitting configurations may vary.

CAUTION: Vertical risers are not recommended.

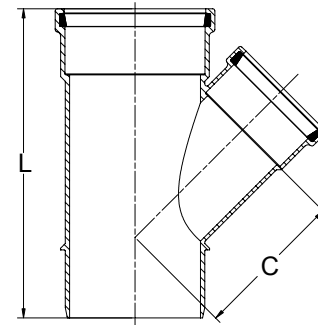
Vertical risers are subject to problems without special consideration of soil/pipe interaction, dead & live loads, and installation procedures.

45° WYE GxGxG



| SIZE | PART No. | STYLE | C | L | WT. (approx.) |
|-------|----------|--------|------|------|---------------|
| 4X4 | 201-0404 | Molded | 5.2 | 11.8 | 2.4 |
| 6X4 | 201-0604 | Molded | 6.8 | 16.0 | 4.8 |
| 6X6 | 201-0606 | Molded | 8.0 | 16.0 | 5.6 |
| 8X4 | 201-0804 | Molded | 8.7 | 15.0 | 7.3 |
| 8X6 | 201-0806 | Molded | 9.2 | 18.5 | 9.4 |
| 8X8 | 201-0808 | Molded | 10.2 | 20.5 | 12.1 |
| 10X4 | 201-1004 | Fab | 12.5 | 26.0 | 14.0 |
| 10X6 | 201-1006 | Fab | 12.5 | 29.0 | 17.0 |
| 10X8 | 201-1008 | Fab | 13.8 | 31.5 | 20.0 |
| 10X10 | 201-1010 | Fab | 15.0 | 35.5 | 27.0 |
| 12X4 | 201-1204 | Fab | 13.8 | 27.0 | 21.0 |
| 12X6 | 201-1206 | Fab | 13.8 | 30.0 | 24.0 |
| 12X8 | 201-1208 | Fab | 15.1 | 32.5 | 28.0 |
| 12X10 | 201-1210 | Fab | 15.3 | 36.5 | 33.0 |
| 12X12 | 201-1212 | Fab | 18.1 | 39.5 | 44.0 |
| 15X4 | 201-1504 | Fab | 15.7 | 29.0 | 32.0 |
| 15X6 | 201-1506 | Fab | 15.7 | 32.0 | 36.0 |
| 15X8 | 201-1508 | Fab | 17.0 | 34.5 | 40.0 |
| 15X10 | 201-1510 | Fab | 18.2 | 38.5 | 50.0 |
| 15X12 | 201-1512 | Fab | 20.0 | 41.5 | 59.0 |
| 15X15 | 201-1515 | Fab | 22.0 | 46.0 | 66.0 |

45° WYE GxSxG



| SIZE | PART No. | STYLE | C | L | WT. (approx.) |
|------|----------|--------|------|------|---------------|
| 4X4 | 202-0404 | Molded | 5.2 | 11.8 | 2.0 |
| 6X4 | 202-0604 | Molded | 6.8 | 16.0 | 4.3 |
| 6X6 | 202-0606 | Molded | 8.0 | 16.0 | 5.4 |
| 8X4 | 202-0804 | Molded | 8.7 | 15.0 | 6.6 |
| 8X6 | 202-0806 | Molded | 9.2 | 18.5 | 8.5 |
| 8X8 | 202-0808 | Molded | 10.2 | 20.0 | 11.6 |

CALL FOR OTHER SIZES, CONFIGURATIONS & GASKET MATERIALS.



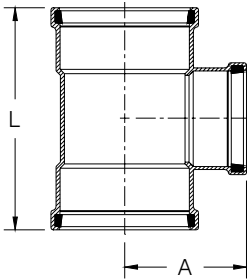
THE HARRINGTON CORPORATION

P.O. BOX 10335 • LYNCHBURG VIRGINIA 24506 • PLANT 3721 COHEN PLACE • LYNCHBURG VIRGINIA 24501
 PHONE: (434) 845-7094 • FAX: (434) 845-8562 • E-MAIL: sales@harcofittings.com

HARCO SDR-35 PVC GASKETED SEWER FITTINGS

DESIGN DATA

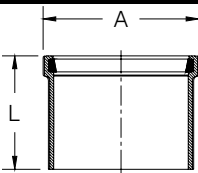
TEE GxGxG



(Molded fitting Shown)

| SIZE | PART No. | STYLE | A | L | WT. (approx.) |
|-------|----------|--------|------|------|---------------|
| 4X4 | 212-0404 | Molded | 4.9 | 10.0 | 1.9 |
| 6X4 | 212-0604 | Molded | 5.9 | 11.7 | 3.9 |
| 6X6 | 212-0606 | Molded | 6.8 | 13.7 | 4.5 |
| 8X4 | 212-0804 | Molded | 7.0 | 13.0 | 7.0 |
| 8X6 | 212-0806 | Molded | 7.9 | 15.0 | 8.1 |
| 8X8 | 212-0808 | Molded | 8.6 | 17.9 | 9.4 |
| 10X4 | 212-1004 | Fab | 12.7 | 23.5 | 14.0 |
| 10X6 | 212-1006 | Fab | 13.2 | 25.2 | 16.0 |
| 10X8 | 212-1008 | Fab | 13.7 | 27.5 | 17.0 |
| 10X10 | 212-1010 | Fab | 15.2 | 29.5 | 23.0 |
| 12X4 | 212-1204 | Fab | 13.6 | 24.5 | 20.0 |
| 12X6 | 212-1206 | Fab | 14.1 | 26.5 | 23.0 |
| 12X8 | 212-1208 | Fab | 14.6 | 28.5 | 25.0 |
| 12X10 | 212-1210 | Fab | 16.1 | 30.5 | 29.0 |
| 12X12 | 212-1212 | Fab | 16.6 | 32.5 | 31.0 |
| 15X4 | 212-1504 | Fab | 15.0 | 26.5 | 31.0 |
| 15X6 | 212-1506 | Fab | 15.5 | 28.5 | 34.0 |
| 15X8 | 212-1508 | Fab | 16.0 | 30.5 | 36.0 |
| 15X10 | 212-1510 | Fab | 17.5 | 32.5 | 41.0 |
| 15X12 | 212-1512 | Fab | 18.0 | 34.5 | 45.0 |
| 15X15 | 212-1515 | Fab | 19.0 | 37.5 | 61.0 |

MANHOLE ADAPTERS (SINGLE BELL)



Note: Adapter has a sand coated exterior surface

(Molded fitting Shown)

| SIZE | PART No. | STYLE | A | L | WT. (approx.) |
|------|----------|--------|------|-----|---------------|
| 4 | 258-040 | Molded | 5.2 | 4.3 | 1.3 |
| 6 | 258-060 | Molded | 7.4 | 6.0 | 2.6 |
| 8 | 258-080 | Molded | 9.6 | 7.0 | 4.6 |
| 10 | 258-100 | Fab | 12.3 | 6.3 | 6.1 |
| 12 | 258-120 | Fab | 14.5 | 6.8 | 9.1 |
| 15 | 258-150 | Fab | 17.5 | 7.3 | 11.5 |

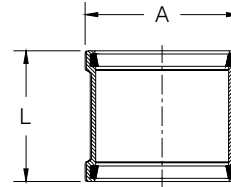
NOTES:

- All lay lengths & weights are approximate and are subject to change without notice.
- Fabricated fitting configurations may vary.

CAUTION: Vertical risers are not recommended.

Vertical risers are subject to problems without special consideration of soil/pipe interaction, dead & live loads, and installation procedures.

MANHOLE ADAPTERS (DOUBLE BELL)

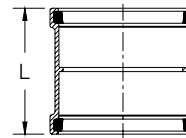


Note: Adapter has a sand coated exterior surface

(Molded fitting Shown)

| SIZE | PART No. | STYLE | A | L | WT. (approx.) |
|------|----------|--------|------|------|---------------|
| 4 | 257-040 | Molded | 5.6 | 5.6 | 0.9 |
| 6 | 257-060 | Molded | 7.1 | 7.1 | 3.9 |
| 8 | 257-080 | Molded | 8.3 | 8.3 | 7.1 |
| 10 | 257-010 | Fab | 12.5 | 12.5 | 12.0 |
| 12 | 257-012 | Fab | 13.5 | 11.5 | 16.0 |
| 15 | 257-015 | Fab | 14.5 | 14.5 | 23.0 |

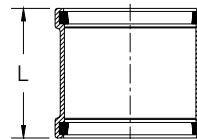
LINE COUPLING (w/ Stop)



(Molded fitting Shown)

| SIZE | PART No. | STYLE | L | WT. (approx.) |
|------|----------|--------|------|---------------|
| 4 | 208-040 | Molded | 5.5 | 1.0 |
| 6 | 208-060 | Molded | 7.1 | 2.2 |
| 8 | 208-080 | Molded | 8.3 | 4.3 |
| 10 | 208-100 | Fab | 13.5 | 6.0 |
| 12 | 208-120 | Fab | 14.5 | 12.0 |
| 15 | 208-150 | Fab | 17.0 | 22.0 |

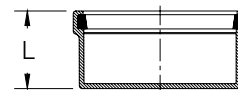
REPAIR COUPLING (Sleeve)



(Molded fitting Shown)

| SIZE | PART No. | STYLE | L | WT. (approx.) |
|------|----------|--------|------|---------------|
| 4 | 209-040 | Molded | 5.5 | 1.1 |
| 6 | 209-060 | Molded | 7.1 | 2.2 |
| 8 | 209-080 | Molded | 8.3 | 4.1 |
| 10 | 209-100 | Fab | 12.5 | 7.0 |
| 12 | 209-120 | Fab | 11.5 | 11.0 |
| 15 | 209-150 | Fab | 14.5 | 17.0 |

CAP



(Molded fitting Shown)

| SIZE | PART No. | STYLE | L | WT. (approx.) |
|------|----------|--------|------|---------------|
| 4 | 249-040 | Molded | 2.7 | 0.6 |
| 6 | 249-060 | Molded | 3.5 | 1.4 |
| 8 | 249-080 | Molded | 4.0 | 3.0 |
| 10 | 249-100 | Fab | 10.5 | 8.0 |
| 12 | 249-120 | Fab | 12.0 | 12.0 |
| 15 | 249-150 | Fab | 14.0 | 23.0 |

CALL FOR OTHER SIZES, CONFIGURATIONS & GASKET MATERIALS.



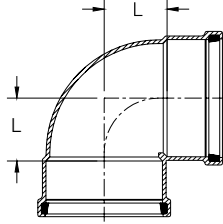
THE HARRINGTON CORPORATION

P.O. BOX 10335 • LYNCHBURG VIRGINIA 24506 • PLANT 3721 COHEN PLACE • LYNCHBURG VIRGINIA 24501
 PHONE: (434) 845-7094 • FAX: (434) 845-8562 • E-MAIL: sales@harcofittings.com

HARCO SDR-35 PVC GASKETED SEWER FITTINGS

DIMENSIONAL DATA

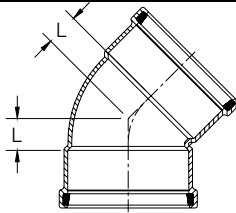
90° Bend GxG



(Molded fitting Shown)

| SIZE | PART No. | STYLE | L | WT. (approx.) |
|------|----------|--------|------|---------------|
| 4 | 218-040 | Molded | 2.4 | 1.4 |
| 6 | 218-060 | Molded | 3.5 | 3.3 |
| 8 | 218-080 | Molded | 4.6 | 7.0 |
| 10 | 218-100 | Fab | 9.0 | 21.0 |
| 12 | 218-120 | Fab | 11.5 | 30.0 |
| 15 | 218-150 | Fab | 12.5 | 52.0 |

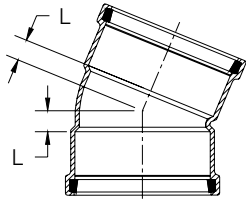
45° Bend GxG



(Molded fitting Shown)

| SIZE | PART No. | STYLE | L | WT. (approx.) |
|------|----------|--------|-----|---------------|
| 4 | 222-040 | Molded | 1.2 | 1.2 |
| 6 | 222-060 | Molded | 1.6 | 2.8 |
| 8 | 222-080 | Molded | 2.2 | 5.7 |
| 10 | 222-100 | Fab | 3.3 | 16.0 |
| 12 | 222-120 | Fab | 5.5 | 24.0 |
| 15 | 222-150 | Fab | 5.5 | 38.0 |

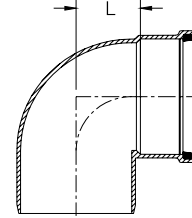
22.5° Bend GxG



(Molded fitting Shown)

| SIZE | PART No. | STYLE | L | WT. (approx.) |
|------|----------|--------|-----|---------------|
| 4 | 224-040 | Molded | 0.7 | 1.1 |
| 6 | 224-060 | Molded | 1.1 | 2.6 |
| 8 | 224-080 | Molded | 1.3 | 5.1 |
| 10 | 224-100 | Fab | 2.0 | 16.0 |
| 12 | 224-120 | Fab | 2.5 | 25.0 |
| 15 | 224-150 | Fab | 4.8 | 40.0 |

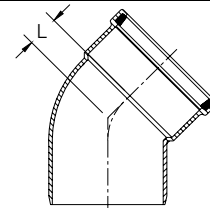
90° Bend GxS



(Molded fitting Shown)

| SIZE | PART No. | STYLE | L | WT. (approx.) |
|------|----------|--------|------|---------------|
| 4 | 219-040 | Molded | 2.4 | 1.1 |
| 6 | 219-060 | Molded | 3.5 | 2.8 |
| 8 | 219-080 | Molded | 4.6 | 6.1 |
| 10 | 219-100 | Fab | 9.0 | 19.0 |
| 12 | 219-120 | Fab | 11.5 | 30.0 |
| 15 | 219-150 | Fab | 12.5 | 50.0 |

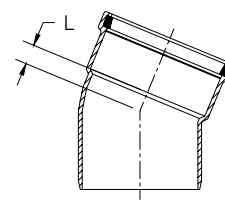
45° Bend GxS



(Molded fitting Shown)

| SIZE | PART No. | STYLE | L | WT. (approx.) |
|------|----------|--------|-----|---------------|
| 4 | 223-040 | Molded | 1.2 | 0.9 |
| 6 | 223-060 | Molded | 1.6 | 2.3 |
| 8 | 223-080 | Molded | 2.2 | 5.0 |
| 10 | 223-100 | Fab | 3.3 | 15.0 |
| 12 | 223-120 | Fab | 5.5 | 23.0 |
| 15 | 223-150 | Fab | 5.5 | 31.0 |

22.5° Bend GxS



(Molded fitting Shown)

| SIZE | PART No. | STYLE | L | WT. (approx.) |
|------|----------|--------|-----|---------------|
| 4 | 225-040 | Molded | 0.7 | 0.9 |
| 6 | 225-060 | Molded | 1.1 | 2.1 |
| 8 | 225-080 | Molded | 1.3 | 4.4 |
| 10 | 225-100 | Fab | 2.0 | 15.0 |
| 12 | 225-120 | Fab | 2.5 | 22.0 |
| 15 | 225-150 | Fab | 4.8 | 33.0 |

NOTES:

- All lay lengths & weights are approximate and are subject to change without notice.
- Fabricated fitting configurations may vary.

CAUTION: Vertical risers are not recommended.

Vertical risers are subject to problems without special consideration of soil/pipe interaction, dead & live loads, and installation procedures.

CALL FOR OTHER SIZES, CONFIGURATIONS & GASKET MATERIALS.



THE HARRINGTON CORPORATION

P.O. BOX 10335 • LYNCHBURG VIRGINIA 24506 • PLANT 3721 COHEN PLACE • LYNCHBURG VIRGINIA 24501
 PHONE: (434) 845-7094 • FAX: (434) 845-8562 • E-MAIL: sales@harcofittings.com

HARCO SDR-35 PVC GASKETED SEWER FITTINGS

DIMENSIONAL DATA

| TEE- WYE GxGxG | | | | | |
|-------------------------------|----------|--------|------|------|---------------|
| <p>(Molded fitting Shown)</p> | | | | | |
| SIZE | PART No. | STYLE | C | L | WT. (approx.) |
| 4X4 | 205-0404 | Molded | 3.7 | 11.8 | 2.3 |
| 6X4 | 205-0604 | Molded | 4.6 | 15.5 | 4.6 |
| 6X6 | 205-0606 | Molded | 5.1 | 15.5 | 5.3 |
| 8X4 | 205-0804 | Molded | 5.6 | 14.2 | 6.8 |
| 8X6 | 205-0806 | Molded | 6.1 | 16.4 | 8.4 |
| 8X8 | 205-0808 | Molded | 6.3 | 17.8 | 9.6 |
| 10X4 | 205-1004 | Fab | 12.1 | 26.0 | 16.0 |
| 10X6 | 205-1006 | Fab | 13.8 | 29.0 | 19.0 |
| 12X4 | 205-1204 | Fab | 11.9 | 27.0 | 22.0 |
| 12X6 | 205-1206 | Fab | 14.4 | 30.0 | 26.0 |
| 15X4 | 205-1504 | Fab | 12.6 | 29.0 | 33.0 |
| 15X6 | 205-1506 | Fab | 15.8 | 32.0 | 41.0 |

| TEE- WYE GxSxG | | | | | |
|-------------------------------|----------|--------|-----|------|---------------|
| <p>(Molded fitting Shown)</p> | | | | | |
| SIZE | PART No. | STYLE | C | L | WT. (approx.) |
| 4X4 | 206-0404 | Molded | 3.7 | 11.8 | 2.0 |
| 6X4 | 206-0604 | Molded | 4.6 | 15.5 | 4.1 |
| 6X6 | 206-0606 | Molded | 5.1 | 15.5 | 4.5 |
| 8X4 | 206-0804 | Molded | 5.6 | 14.2 | 6.1 |
| 8X6 | 206-0806 | Molded | 6.1 | 16.4 | 7.6 |
| 8X8 | 206-0808 | Molded | 6.3 | 17.8 | 9.2 |

NOTES:

- All lay lengths & weights are approximate and are subject to change without notice.
- Fabricated fitting configurations may vary.

CAUTION: Vertical risers are not recommended.

Vertical risers are subject to problems without special consideration of soil/pipe interaction, dead & live loads, and installation procedures.

| PERMANENT PLUG | | | | | |
|-------------------------------|----------|--------|------|-----|---------------|
| <p>(Molded fitting Shown)</p> | | | | | |
| SIZE | PART No. | STYLE | A | B | WT. (approx.) |
| 4 | 244-040 | Molded | 4.5 | 2.8 | 0.4 |
| 6 | 244-060 | Molded | 6.7 | 3.7 | 1.1 |
| 8 | 244-080 | Molded | 8.9 | 4.3 | 5.3 |
| 10 | 244-100 | Fab | 11.1 | 6.0 | 7.0 |
| 12 | 244-120 | Fab | 13.2 | 7.0 | 10.0 |
| 15 | 244-150 | Fab | 16.2 | 9.0 | 17.0 |

| TEMPORARY PLUG (made from polyethylene) | | | | |
|---|----------|--------|-----|---------------|
| <p>(Molded fitting Shown)</p> | | | | |
| SIZE | PART No. | STYLE | L | WT. (approx.) |
| 4 | 247-040 | Molded | 4.3 | 0.2 |
| 6 | 247-060 | Molded | 3.8 | 0.3 |
| 8 | 247-080 | Molded | 8.4 | 0.9 |

| SADDLE WYE | | | | |
|---|----------|--------|------|---------------|
| <p>(Saddle gasket & SS straps not shown) (Molded fitting Shown)</p> | | | | |
| SIZE | PART No. | STYLE | A | WT. (approx.) |
| 6x4 | 255-064 | Molded | 8.9 | 1.4 |
| 8x4 | 255-084 | Molded | 10.4 | 1.5 |
| 8x6 | 255-086 | Molded | 12.0 | 3.3 |
| 10x4 | 255-104 | Molded | 11.9 | 1.2 |
| 10x6 | 255-106 | Molded | 13.0 | 3.3 |
| 12x4 | 255-124 | Molded | 13.4 | 1.2 |
| 12x6 | 255-126 | Molded | 14.3 | 3.8 |

| SADDLE TEE | | | | |
|---|----------|--------|-----|---------------|
| <p>(Saddle gasket & SS straps not shown) (Molded fitting Shown)</p> | | | | |
| SIZE | PART No. | STYLE | A | WT. (approx.) |
| 6x4 | 256-064 | Molded | 3.3 | 1.0 |
| 8x4 | 256-084 | Molded | 4.5 | 1.2 |
| 8x6 | 256-086 | Molded | 4.7 | 2.4 |
| 10x4 | 256-104 | Molded | 5.5 | 3.3 |
| 10x6 | 256-106 | Molded | 5.7 | 2.3 |
| 12x4 | 256-124 | Molded | 6.5 | 1.2 |
| 12x6 | 256-126 | Molded | 6.6 | 3.1 |

CALL FOR OTHER SIZES, CONFIGURATIONS & GASKET MATERIALS.



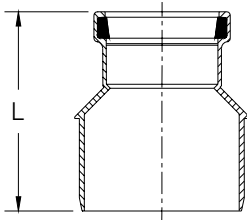
THE HARRINGTON CORPORATION

P.O. BOX 10335 • LYNCHBURG VIRGINIA 24506 • PLANT 3721 COHEN PLACE • LYNCHBURG VIRGINIA 24501
 PHONE: (434) 845-7094 • FAX: (434) 845-8562 • E-MAIL: sales@harcofittings.com

HARCO SDR-35 PVC GASKETED SEWER FITTINGS

DESIGN DATA

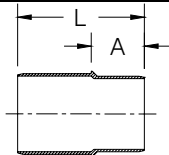
INCREASER GxS



(Molded fitting Shown)

| SIZE | PART No. | STYLE | L | WT. (approx.) |
|-------|----------|--------|------|---------------|
| 4x6 | 216-0406 | Molded | 8.1 | 1.4 |
| 4x8 | 216-0408 | Fab | 9.1 | 2.7 |
| 4x10 | 216-0410 | Fab | 13.2 | 7.5 |
| 4x12 | 216-0412 | Fab | 13.5 | 11.0 |
| 4x15 | 216-0415 | Fab | 15.0 | 19.0 |
| 6x8 | 216-0608 | Molded | 9.0 | 3.0 |
| 6x10 | 216-0610 | Fab | 13.3 | 7.0 |
| 6x12 | 216-0612 | Fab | 13.6 | 13.0 |
| 6x15 | 216-0615 | Fab | 14.8 | 17.0 |
| 8x10 | 216-0810 | Fab | 13.4 | 9.0 |
| 8x12 | 216-0812 | Fab | 13.7 | 12.0 |
| 8x15 | 216-0815 | Fab | 14.9 | 19.0 |
| 10x12 | 216-1012 | Fab | 22.0 | 16.0 |
| 10x15 | 216-1015 | Fab | 21.8 | 21.0 |
| 12x15 | 216-1215 | Fab | 24.5 | 24.0 |

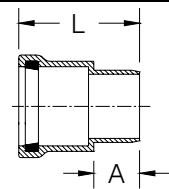
ADAPTER (Sch. 40 x 3034 SxS)



(Molded fitting Shown)

| SIZE | PART No. | STYLE | A | L | WT. (approx.) |
|------|----------|--------|-----|-----|---------------|
| 4x4 | 240-040 | Molded | 2.8 | 6.9 | 1.5 |
| 6x6 | 240-060 | Molded | 3.5 | 8.1 | 2.9 |

ADAPTER (Sch. 40 x 3034 GxS)



(Molded fitting Shown)

| SIZE | PART No. | STYLE | A | L | WT. (approx.) |
|------|----------|--------|-----|-----|---------------|
| 4x4 | 235-040 | Molded | 2.7 | 7.1 | 1.6 |
| 6x6 | 235-060 | Molded | 3.5 | 8.4 | 3.7 |

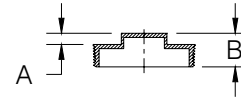
NOTES:

- All lay lengths & weights are approximate and are subject to change without notice.
- Fabricated fitting configurations may vary.

CAUTION: Vertical risers are not recommended.

Vertical risers are subject to problems without special consideration of soil/pipe interaction, dead & live loads, and installation procedures.

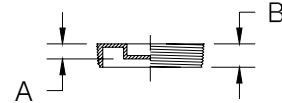
CLEAN-OUT PLUG (RAISED)



(Molded fitting Shown)

| SIZE | PART No. | A | B | WT. (approx.) |
|------|----------|----|-----|---------------|
| 4 | 261-040 | .5 | 1.5 | 0.2 |
| 6 | 261-060 | .5 | 1.5 | 0.5 |

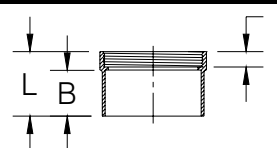
CLEAN-OUT PLUG (RECESSED)



(Molded fitting Shown)

| SIZE | PART No. | A | L | WT. (approx.) |
|------|----------|-----|-----|---------------|
| 4 | 262-040 | 0.7 | 1.0 | 0.2 |
| 6 | 262-060 | 0.7 | 1.0 | 0.6 |

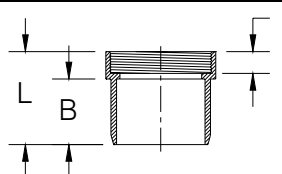
CLEAN-OUT ADAPTER (HUB)



(Molded fitting Shown)

| SIZE | PART No. | A | B | L | WT. (approx.) |
|------|----------|-----|-----|-----|---------------|
| 4 | 259-040 | 1.0 | 1.8 | 2.9 | 0.5 |
| 6 | 259-060 | 1.0 | 3.0 | 4.2 | 0.9 |

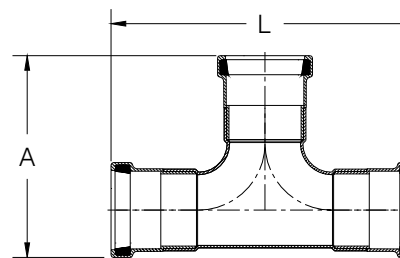
CLEAN-OUT ADAPTER (SPIGOT)



(Molded fitting Shown)

| SIZE | PART No. | A | B | L | WT. (approx.) |
|------|----------|-----|-----|-----|---------------|
| 4 | 260-040 | 1.0 | 1.8 | 7.1 | 0.6 |
| 6 | 260-060 | 1.0 | 3.0 | 8.4 | 0.9 |

2 WAY CLEAN-OUT TEE



(Molded fitting Shown)

| SIZE | PART No. | STYLE | A | L | WT. (approx.) |
|------|----------|-------|------|------|---------------|
| 4 | 213-040 | Fab | 11.0 | 16.9 | 3.0 |

CALL FOR OTHER SIZES, CONFIGURATIONS & GASKET MATERIALS.



THE HARRINGTON CORPORATION

P.O. BOX 10335 • LYNCHBURG VIRGINIA 24506 • PLANT 3721 COHEN PLACE • LYNCHBURG VIRGINIA 24501
 PHONE: (434) 845-7094 • FAX: (434) 845-8562 • E-MAIL: sales@harcofittings.com