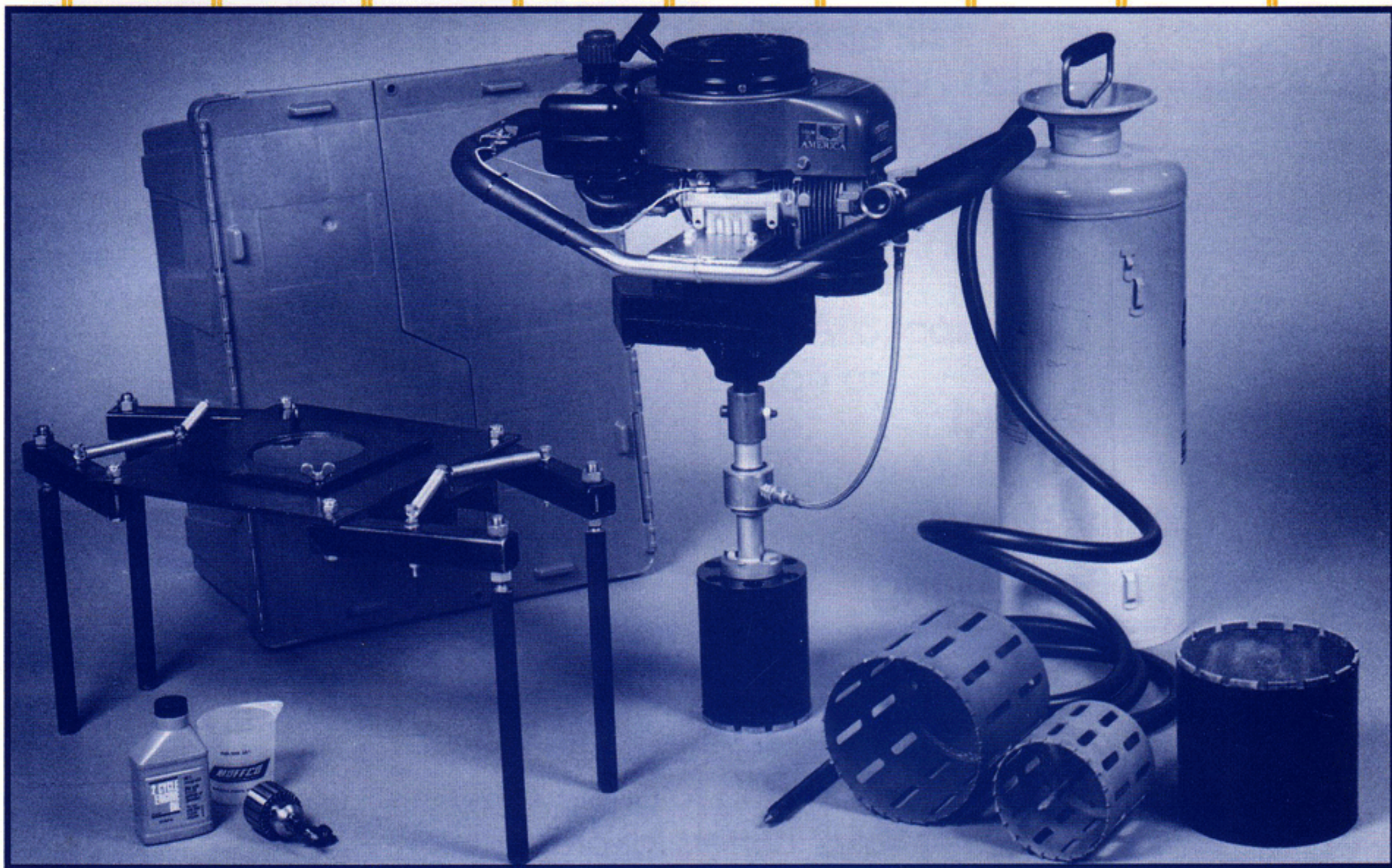




EASY TAP SYSTEM

Making Sewer Taps As Simple As...



...1, 2, 3

PREDCO's precision machine cut hole helps prevent most common sources of water infiltration in sewers.

PREDCO cuts holes in: clay, concrete, cast and ductile iron, fiberglass, plastic and A/C pipe.

PREDCO makes sewer tapping a quick and easy job.



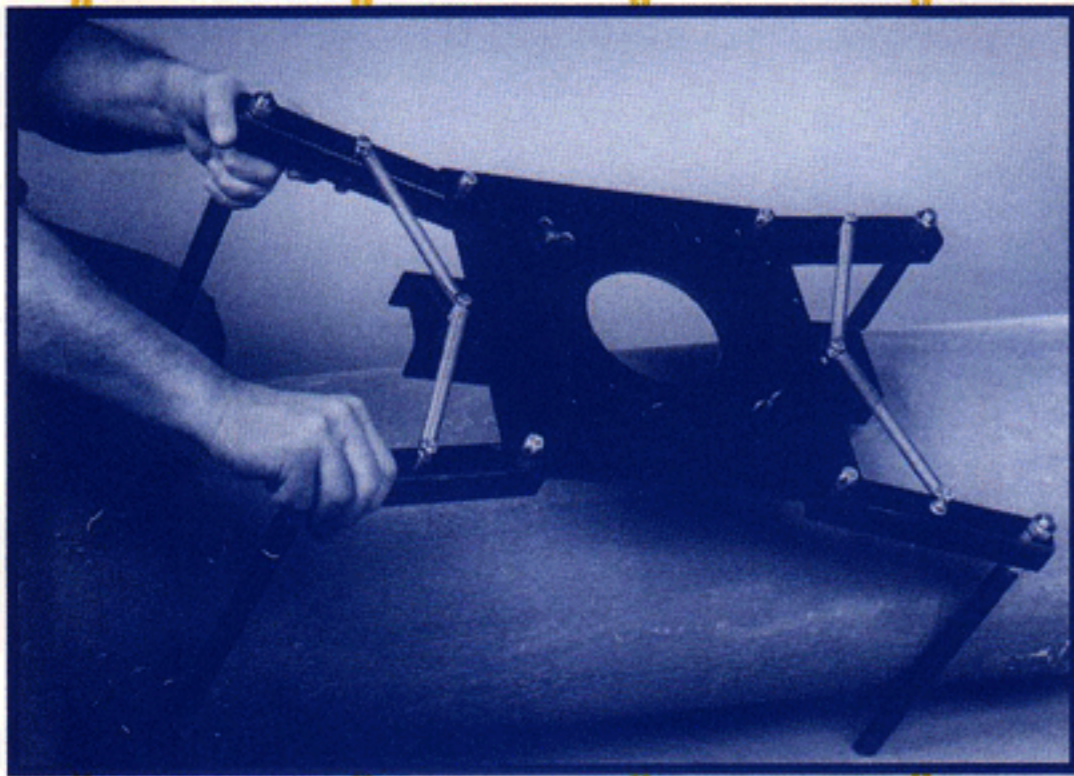
Plumbing Research Engineering and Development Company

P.O. Box 13260 18 Mile Rd. Rodney, Michigan 49342 • 1-800-323-6188 Fax 800-323-6189
PREDCO
800-323-6188

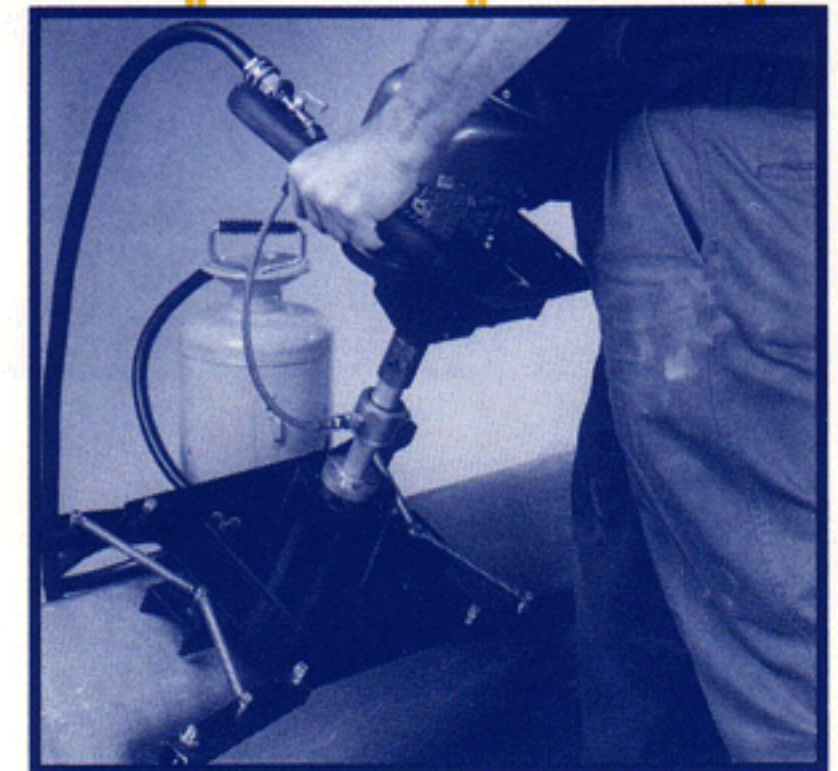
1. Cut Hole

Predco's precision machine cut hole puts an end to common sources of infiltration - cracked or damaged pipe caused by poorly made sewer taps.

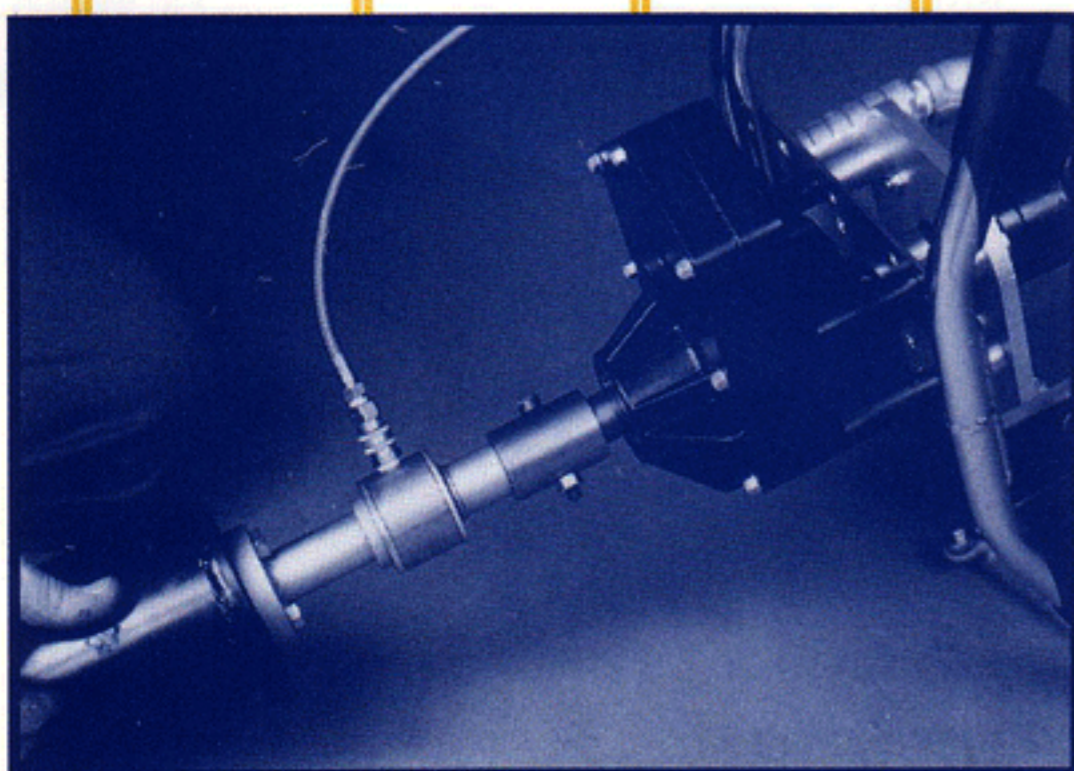
- **Completely Portable**
- **No Chains or Hold Down Straps Required**
- **Only Top Half of Pipe Needs to be Exposed**
- **Eliminates Costly Hand Tunneling and Backfilling**



The **Predco** Easy Set Hole Cutter Guide System is self clamping to guide 4 1/2" and 6 1/2" cutters for precision cut holes in pipe up to 22" O.D. For pipe larger than 22" O.D. Predco offers a diamond tipped pilot guide system.



Cut hole in sewer pipe. A 4" saddle requires a 4 1/2" hole. A 6" saddle requires a 6 1/2" hole. A **Predco** diamond tipped cutter is used for cutting clay, cast iron, ductile iron and concrete pipes (cooling water must be used). A **Predco** carbide tipped cutter is used for cutting plastic, fiberglass, and A/C pipes.



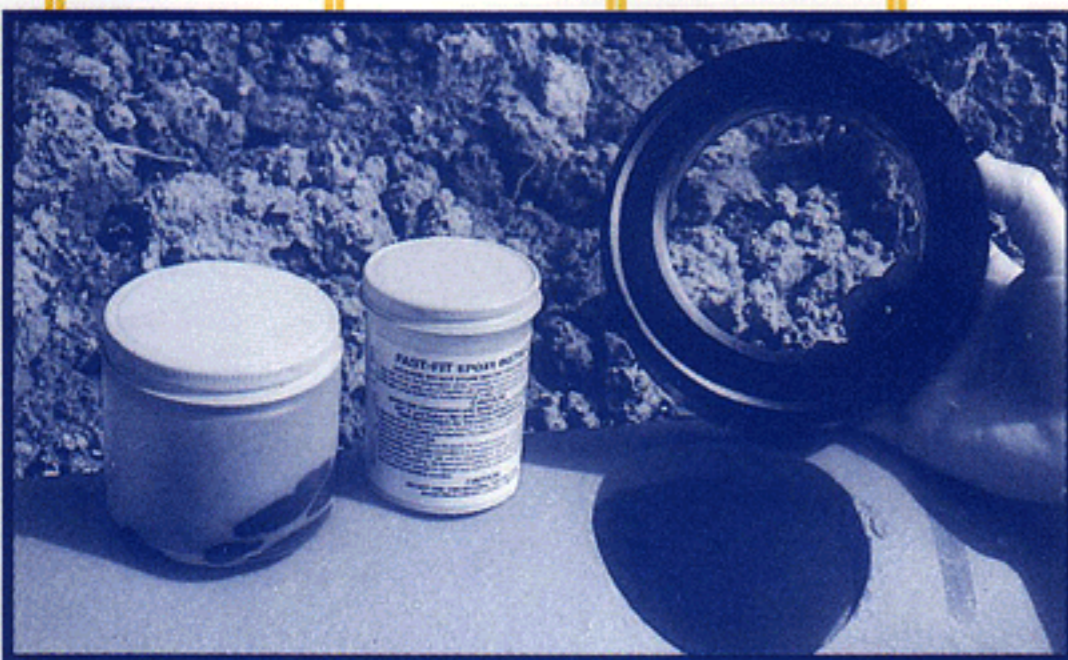
Connect Shell Cutter, arbor and water supply to power unit.

2.

Install Saddle

Predco Fast-Fit Sewer Tap Saddles are made of tough, high impact plastic and are available for 4" and 6" branch openings. Tap saddles fit all 8" sewer pipes without trimming. For larger sewer pipes, simply trim the saddle with a saw or rasp. The trim-to-fit feature of Predco's Fast-Fit Sewer Tap Saddle System reduces your inventory costs.

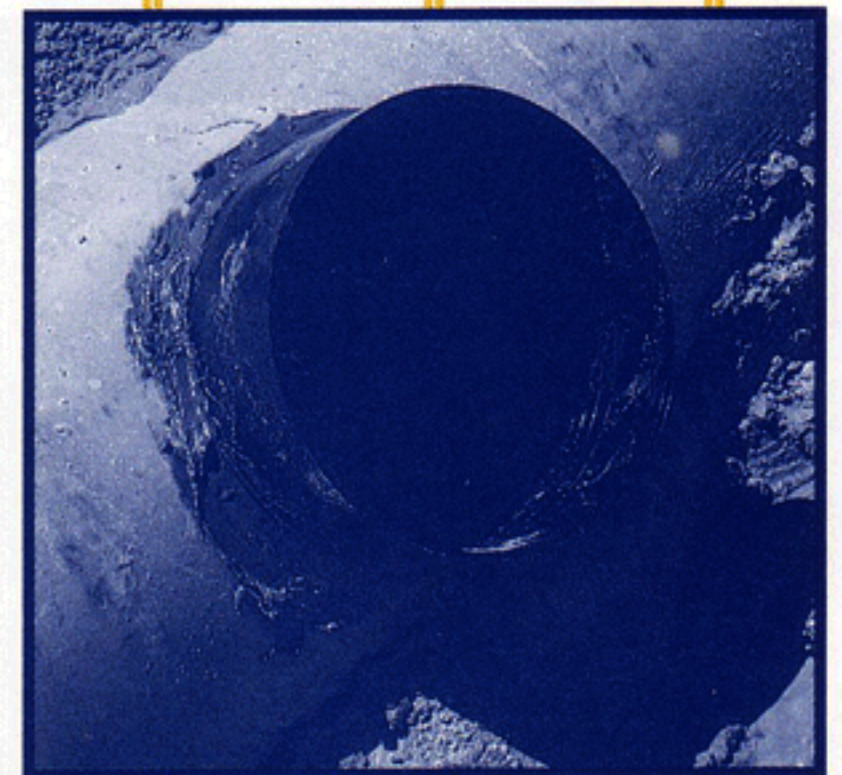
The Complete Predco Fast-Fit Tap Saddle Kit includes quick sealing epoxy which bonds the saddles permanently within minutes to clay, concrete, asbestos cement, PVC, ABS, cast and ductile iron or fiberglass pipe.



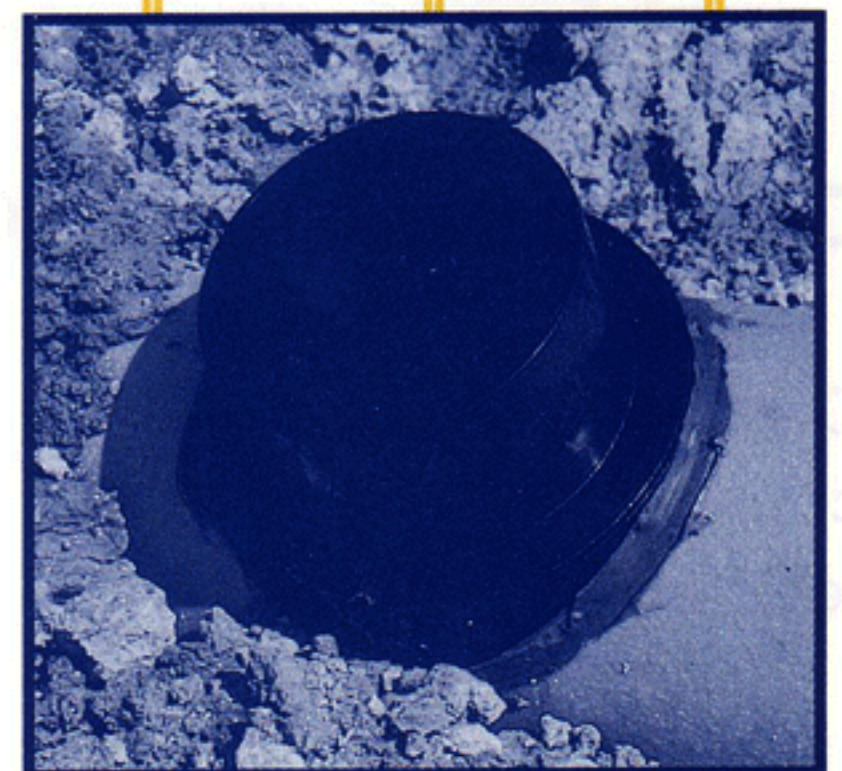
The epoxy kit, supplied with each Fast-Fit Tap Saddle, sets up in minutes and may be used in wet or dry conditions. Simply mix together thoroughly.



Place mixture evenly into bottom cavity of saddle



Place hub tap saddle on a clean pipe surface and smooth epoxy around outer edge of saddle. Pipe surface may be wet, but cannot be submerged or have water flowing across joint area.



The spigot tap saddle connects the branch branch pipe to the saddle with a flexible coupling. The saddle is bonded to the sewer with epoxy the same as the hub tap saddle.

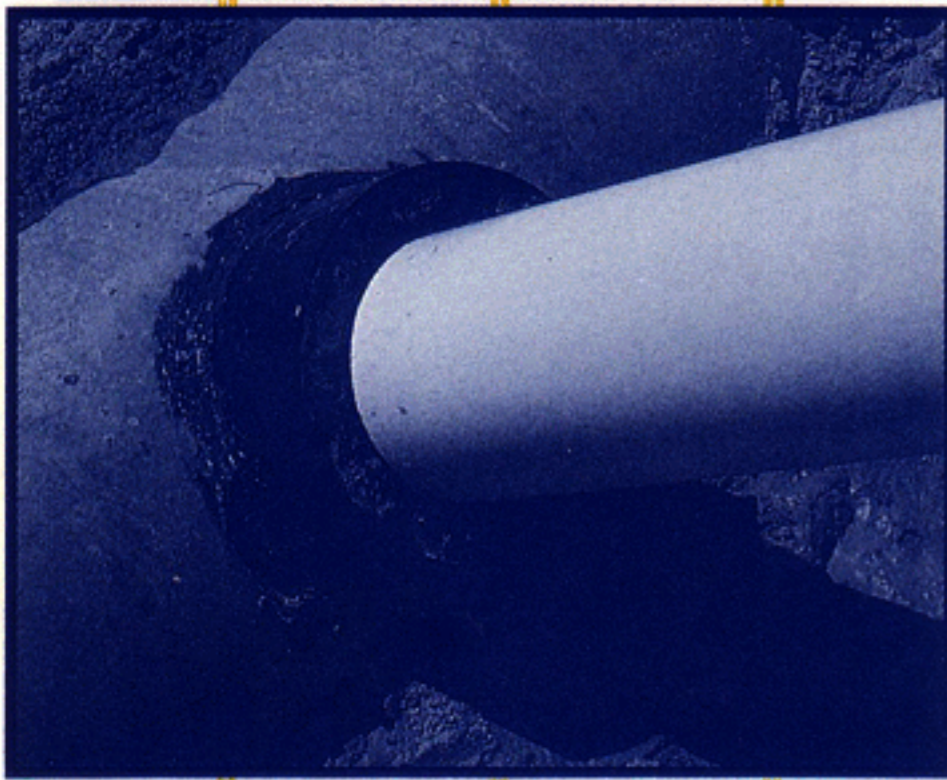
3 Make Connection

The **Predco System** insures a tight sewer tap connection to the branch piping & hub tap saddle using a **Fernco Donut**. When connecting with spigot tap saddle, use supplied coupling.

Compression Sealing Donuts: Connect soil pipe, P.V.C., A.B.S., asbestos cement, field cut or concrete pipe to the hub tap saddle.

Order donut (for hub saddle) or coupling (for spigot saddle) by description... ie.: to connect 4" hub/spigot tap saddle to 4" S.V. soil pipe.

When using a spigot tap saddle the coupling, that will accommodate the branch connection, will be furnished and shipped assembled.

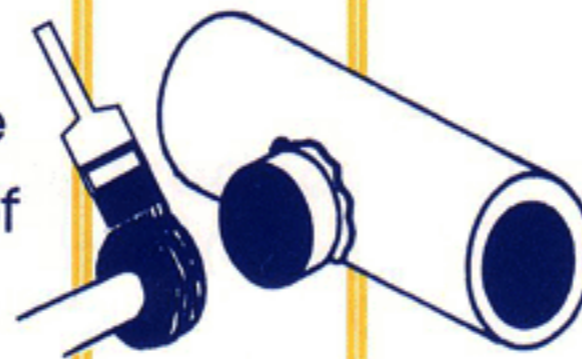


Install Donut Using One of These Methods - Drive Method

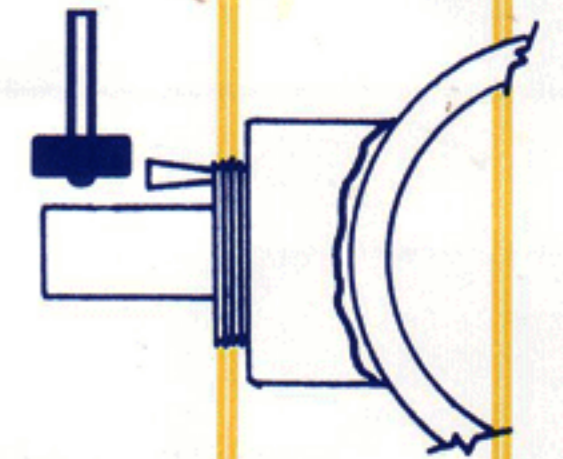
Insert Spigot 1 1/2" past bottom of donut



Lubricate outside of

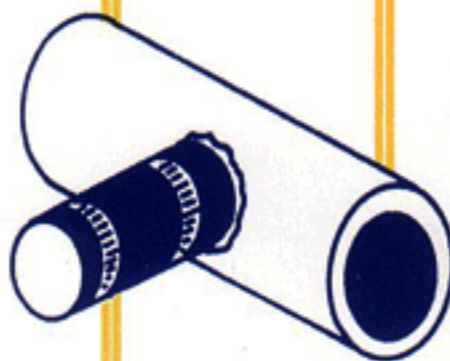


Insert donut & spigot assembly into opening & drive with hammer

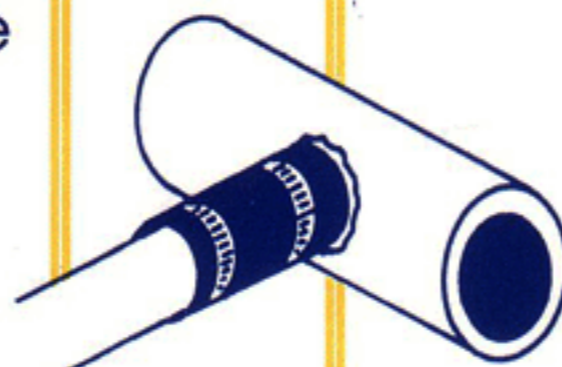


Coupling with Spigot Outlet Saddle

Connect coupling to saddle



Insert pipe into coupling



Tighten screws to 60 in./lbs. torque



Plumbing Research Engineering and Development Company

1-800-323-6188 Fax 800-323-6189