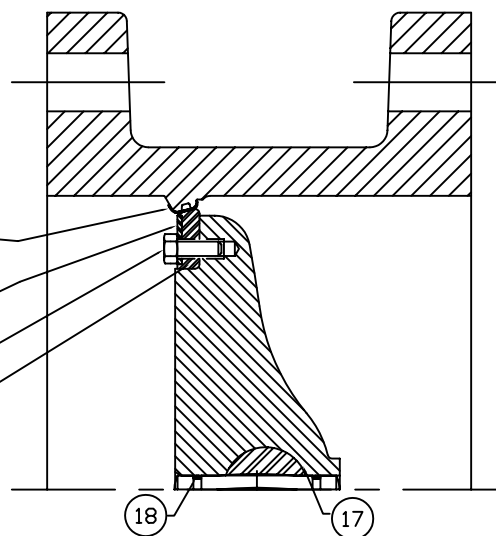


304 STAINLESS STEEL  
BODY SEAT

304 STAINLESS STEEL  
CLAMP RING VULCANIZED  
TO SEAT

### SECTION A-A

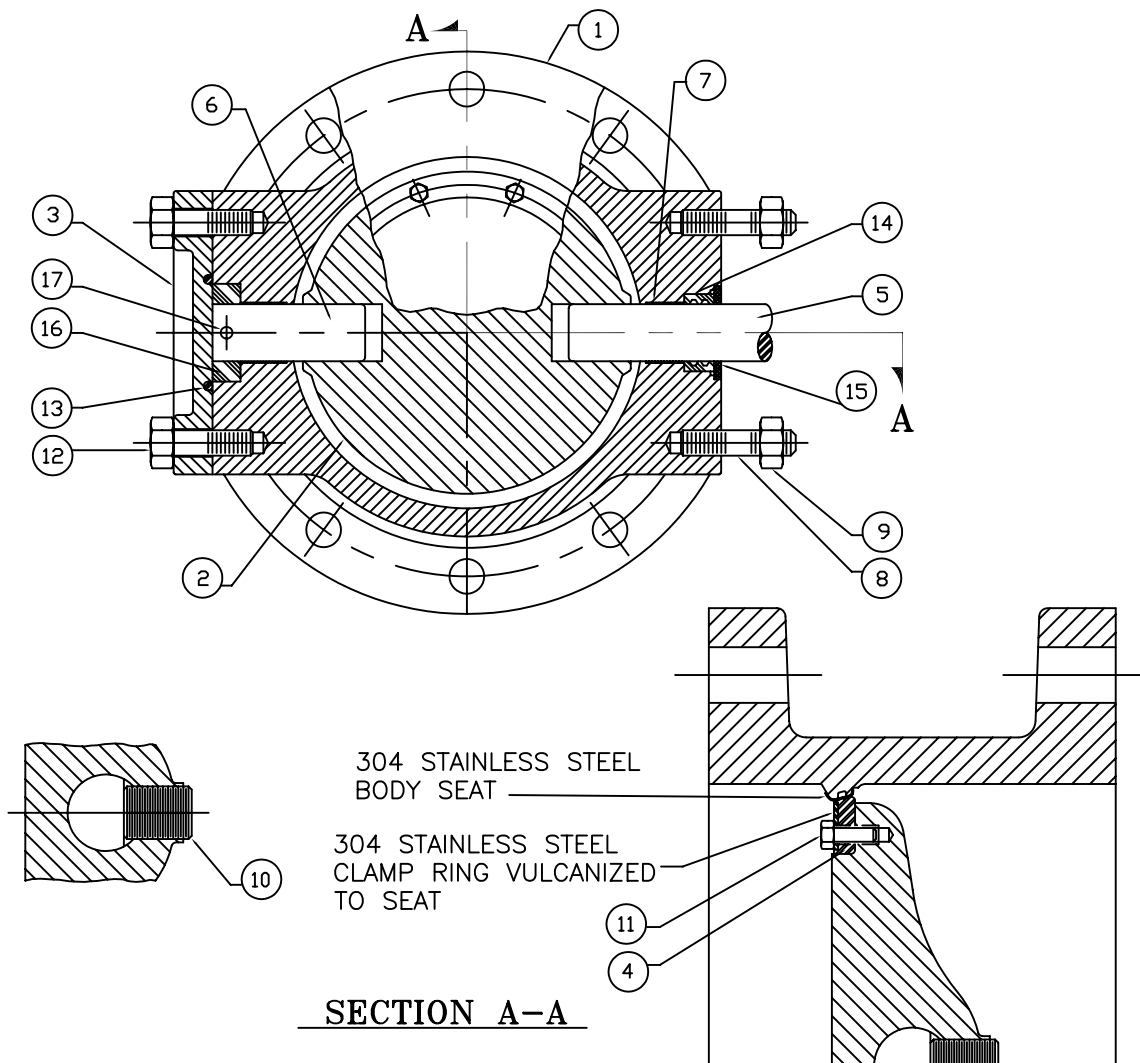


ITEM #	DESCRIPTION	MATERIAL
1	BODY, VALVE	CAST IRON ASTM A-126 CLASS B WITH STN STL SEAT
2	VANE	CAST IRON ASTM A-48 CLASS 40
3	COVER, END	CAST IRON, A-126, CLASS B
4	SEAT RING, VANE	BUNA "S" WITH 304 STAINLESS STEEL INSERT
5	SHAFT	TYPE 304 STN. STL. ASTM A-276
6	O-RING, BODY	BUNA "N"
7	BEARING, BODY	EPOXY FIBERGLASS WITH TEFLON LINER
8	STUD	STEEL, ASTM A-307, ELCTRO ZINC PLATED
9	NUT, HEAVY HEX	STEEL, ASTM A-563, GRADE A, ELCTRO ZINC PLATED
10	SOCKET SCREW, FLAT HEAD HEX	STAINLESS STEEL, 18-8
11	CAPSCREW, HEX	STAINLESS STEEL, 18-8 WITH NYLOK INSERT
12	CAPSCREW, HEX	STEEL, ASTM A-307, ELCTRO ZINC PLATED
13	CARTRIDGE SEAL	UHMW (POLYEHTYLENE)
14	THRUST DISK	ACETEL
15	"O" RING CARTRIDGE, INSIDE	BUNA "N"
16	"O" RING CARTRIDGE, OUTSIDE	BUNA "N"
17	GROOVED PIN	393 STAINLESS STEEL
18	O-RING, GROOVED PIN	BUNA-N

M&H VALVE COMPANY  
ANNISTON, ALABAMA  
A DIVISION OF MCWANE INC.

DWN: TRIJ  
DATE: 7/1/05  
DWG. NO.  
BFE-15-45A

3" THRU 12" STYLE 4500  
CLASS 150 BUTTERFLY VALVE  
SUB-ASSEMBLY / MATERIAL LIST  
FLANGED ENDS



ITEM #	DESCRIPTION	MATERIAL
1	BODY, VALVE	CAST IRON, A-126, CLASS B WITH 304 STAINLESS STEEL SEAT
2	VANE	CAST IRON, A-48, CLASS 40
3	COVER, END	CAST IRON, A-126, CLASS B
4	SEAT RING, VANE	BUNA "N" WITH 304 STAINLESS STEEL INSERT
5	SHAFT, OPERATOR	304 STAINLESS STEEL, ASTM A-276
6	SHAFT, THRUST	304 STAINLESS STEEL, ASTM A-276
7	BUSHING	REINFORCED TEFLON
8	STUD	STEEL, ASTM A-307, ELCTRO ZINC PLATED
9	NUT, HEX	STEEL, ASTM A-307, GRADE A, ELCTRO ZINC PLATED
10	TORQUE PLUG, SHAFT	304 STAINLESS STEEL, ASTM A-276
11	CAPSCREW, HEX	STAINLESS STEEL, 18-8 WITH NYLOK INSERT
12	BOLT, HEX HEAD	STEEL, ASTM A-307, GRADE B, ELCTRO ZINC PLATED
13	O-RING, END COVER	BUNA "N"
14	SHAFT SEAL	BUNA "S"
15	SEAL RING	STEEL, C-1018
16	THRUST COLLAR	BEARING BRONZE, ASTM B-144, ALLOY 3B
17	ROLL PIN	STAINLESS STEEL, A.I.S.I. 420

M&H VALVE COMPANY  
ANNISTON, ALABAMA  
A DIVISION OF MCWANE INC.

DWN: TRIJ  
DATE: 7/1/05  
DWG. NO.  
BFE-15-45B

14" THRU 24" STYLE 4500  
CLASS 150 BUTTERFLY VALVE  
SUB-ASSEMBLY / MATERIAL LIST  
FLANGED ENDS