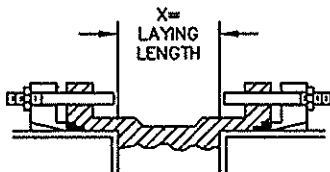
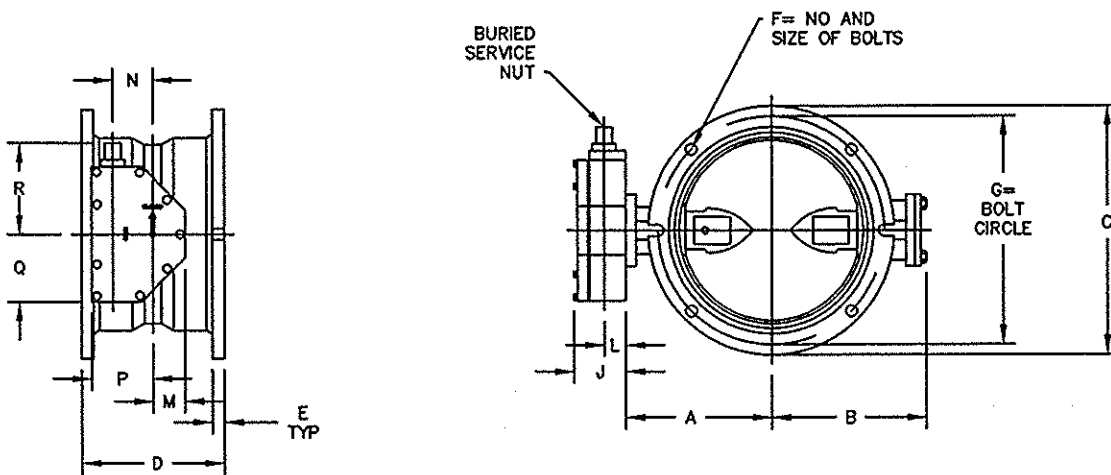


ACTUATOR SIZE	J	L	M	N	P	Q	R	NUMBER OF TURNS
MDT-2S	4-11/16	2	2-1/8	2	4-1/2	4-1/4	8-1/4	32
MDT-3S	5-5/8	2-7/16	3-1/4	3-5/32	5-5/8	5-3/8	10-3/8	30
MDT-4S	6-3/8	2-27/32	3-3/8	4	7-5/16	6-3/4	11-5/16	40
MDT-5	7-9/16	3-15/32	4-1/2	5-1/2	8-3/4	10	17	44

VALVE SIZE	A	B	C	D	E	F	G	X
4	5-1/2	3-1/2	9	8-1/8	1	4--3/4	7 1/2	3-1/8
6	6-1/2	5-1/8	11	8-1/2	1-1/16	6--3/4	9 1/2	3-1/2
8	7-3/4	6-1/2	13-1/4	8-5/8	1-1/8	6--3/4	11 3/4	3-5/8
10	9	9-3/4	15-9/16	9-1/4	1-3/16	8--3/4	14	4-1/4
12	10-1/2	11-3/8	17-15/16	9-1/4	1-1/4	8--3/4	16-1/4	4 1/4
14	11-7/8	12-3/4	20-5/16	11-1/2	1-5/16	10--3/4	18 3/4	4-1/2
16	13-1/2	14-1/2	22-9/16	12	1-3/8	12--3/4	21	5
18	14-3/8	15-3/8	24-11/16	12-1/4	1-3/8	12--3/4	23-1/4	5-1/4
20	16	17	27-3/32	12-1/2	1-1/2	14--3/4	25-1/2	5-1/2



INSTALLATION DIAGRAM  
BOLTS, NUTS, GLANDS  
AND GASKETS FURNISHED  
BY OTHERS



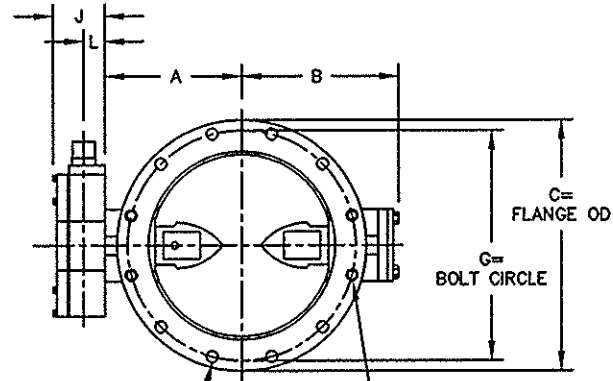
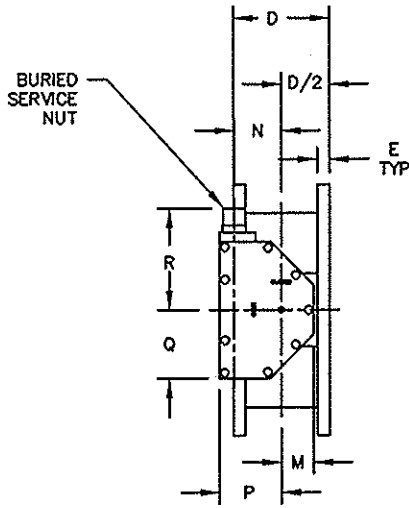
ACTUATOR POSITION 01

NOTES:

1. ALL DIMENSIONS SHOWN IN INCHES. "D" DIMENSION ±1/16" FOR 3" THRU 10" VALVES. "D" DIMENSION ±1/8" FOR 12" THRU 20" VALVES.
2. DIMENSIONS AND DRILLING OF END FLANGES CONFORM TO THE AMERICAN CAST IRON FLANGE STANDARDS, CLASS 125 (B16.1).
3. (RECOMMENDATIONS FOR MATING FLANGES) WHERE INSULATING BUSHINGS ARE USED, IT IS NECESSARY THAT BOLT HOLES BE DRILLED OVERSIZE BY AN AMOUNT EQUAL TO TWO TIMES THE INSULATING SLEEVE THICKNESS TO MAINTAIN THE SAME MINIMUM CLEARANCE FOR BOLTS.
4. VALVES MANUFACTURED AND TESTED IN ACCORDANCE WITH AWWA SPECIFICATIONS C-504-LATEST REVISION, CLASS 150B.
5. SEE DRAWING GA-11486MS FOR VALVE CROSS SECTION.



REV	DATE	BY	DESCRIPTION	APP
LINESEAL III MECHANICAL JOINT ENDS BUTTERFLY VALVE MDT BURIED SERVICE ACTUATOR				
SCALE NONE		DATE 5/12/04		
DRAWN BY DSL		CHECKED BY ES		
APPROVED		GA=BORDER		
DRWG. NO. GA-10705MS				
REV 1				AC



ACTUATOR POSITION 01

F=NO. & SIZE OF BOLTS  
(125# STD. LAYOUT  
STRADDLE CENTERLINE)  
FLANGE BOLT HOLES ARE 1/8"  
LARGER THAN BOLT DIAMETER

TAPPED HOLES "F" UNC 2B X "E" DEEP  
VALVE NO. TAPPED HOLES  
SIZE (EACH FLANGE)  
3"-16" ALL THRU HOLES  
18" & 20" 2-TOP; 2-BOTTOM

ACTUATOR SIZE	J	L	M	N	P	Q	R	NUMBER OF TURNS
MDT-2S	4-11/16	2	2-1/8	2	4-1/2	4-1/4	8-1/4	32
MDT-3S	5-5/8	2-7/16	3-1/4	3-5/32	5-5/8	5-3/8	10-3/8	30
MDT-4S	6-3/8	2-27/32	3-3/8	4	7-5/16	6-3/4	11-5/16	40

VALVE DIMENSIONS

VALVE SIZE	A	B	C	D	E	F	G
3	4-3/4	3-1/4	7-1/2	5	3/4	4--5/8	6
4	5-1/2	3-1/2	9	5	15/16	8--5/8	7-1/2
6	6-1/2	5-1/8	11	5	1	8--3/4	9-1/2
8	7-3/4	6-1/2	13-1/2	6	1-1/8	8--3/4	11-3/4
10	9	9-7/8	16	8	1-3/16	12--7/8	14-1/4
12	10-1/2	11-3/8	19	8	1-1/4	12--7/8	17
14	11-7/8	12-3/4	21	8	1-3/8	12--1	18-3/4
16	13-1/2	14-3/8	23-1/2	8	1-7/16	16--1	21-1/4
18	14-3/8	15-1/4	25	8	1-9/16	16--1-1/8	22-3/4
20	16	16-7/8	27-1/2	8	1-11/16	20--1-1/8	25

NOTES:

- ALL DIMENSIONS SHOWN IN INCHES. "D" DIMENSION ±1/16" FOR 3" THRU 10" VALVES. "D" DIMENSION ±1/8" FOR 12" THRU 20" VALVES.
- DIMENSIONS AND DRILLING OF END FLANGES CONFORM TO THE AMERICAN CAST IRON FLANGE STANDARDS, CLASS 125 (B16.1).
- (RECOMMENDATIONS FOR MATING FLANGES) WHERE INSULATING BUSHINGS ARE USED, IT IS NECESSARY THAT BOLT HOLES BE DRILLED OVERSIZE BY AN AMOUNT EQUAL TO TWO TIMES THE INSULATING SLEEVE THICKNESS TO MAINTAIN THE SAME MINIMUM CLEARANCE FOR BOLTS.
- VALVES MANUFACTURED AND TESTED IN ACCORDANCE WITH AWWA SPECIFICATIONS C-504--LATEST CLASS 150B.

REV	DATE	BY	DESCRIPTION	APP
Δ	9-28-08	CEG	REMOVE PRATT FROM MDT	
<b>Mueller Co.</b>				
3" - 20" LINESEAL III BUTTERFLY VALVE MDT BURIED SERVICE ACTUATOR				
SCALE		NONE		DATE
				7-12-05
DRAWN BY		ES		CHECKED BY
				CEG
APPROVED		GA-BORDER		
DRWG. NO.		GA-11444MS		REV 1
				AC